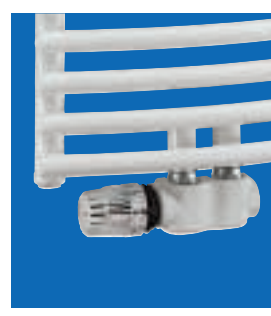


PRODUCTS THAT GO DOWN WELL

# Design-Line

"Beauty regimen" for radiators

## DESIGN LINE



# THE DESIGN LINE CONCEPT

Beautiful design and perfect functionality – this distinguishes all products of our Design Line.

The thermostatic head VD, covers for the thermostatic valve bodies and double connection fittings as well as special colour options for the heads form the core of this line – an extensive beauty range for the radiator.

Design Line offers customers matching colour accessories for more freedom in interior design, elegant covers which enhance the appearance of the entire radiator and the thermostatic head VD for convenient and simultaneously attractive-looking temperature control.

With our Design Line a product range is available which guarantees the proven Heimeier quality and in addition meets modern demands on convenience and interior design.

Many advantages. And thus many good reasons for the specialist to recommend Design Line. You will find that the products go down well.



DESIGN  
LINE

The thermostatic head K is available as an exclusive Design Line model in the current trend colours anthracite grey (RAL 7016), light grey (RAL 7035), dusty grey (RAL 7037) as well as a chrome-plated variant.



Light grey (RAL 7035)



Dusty grey (RAL 7037)

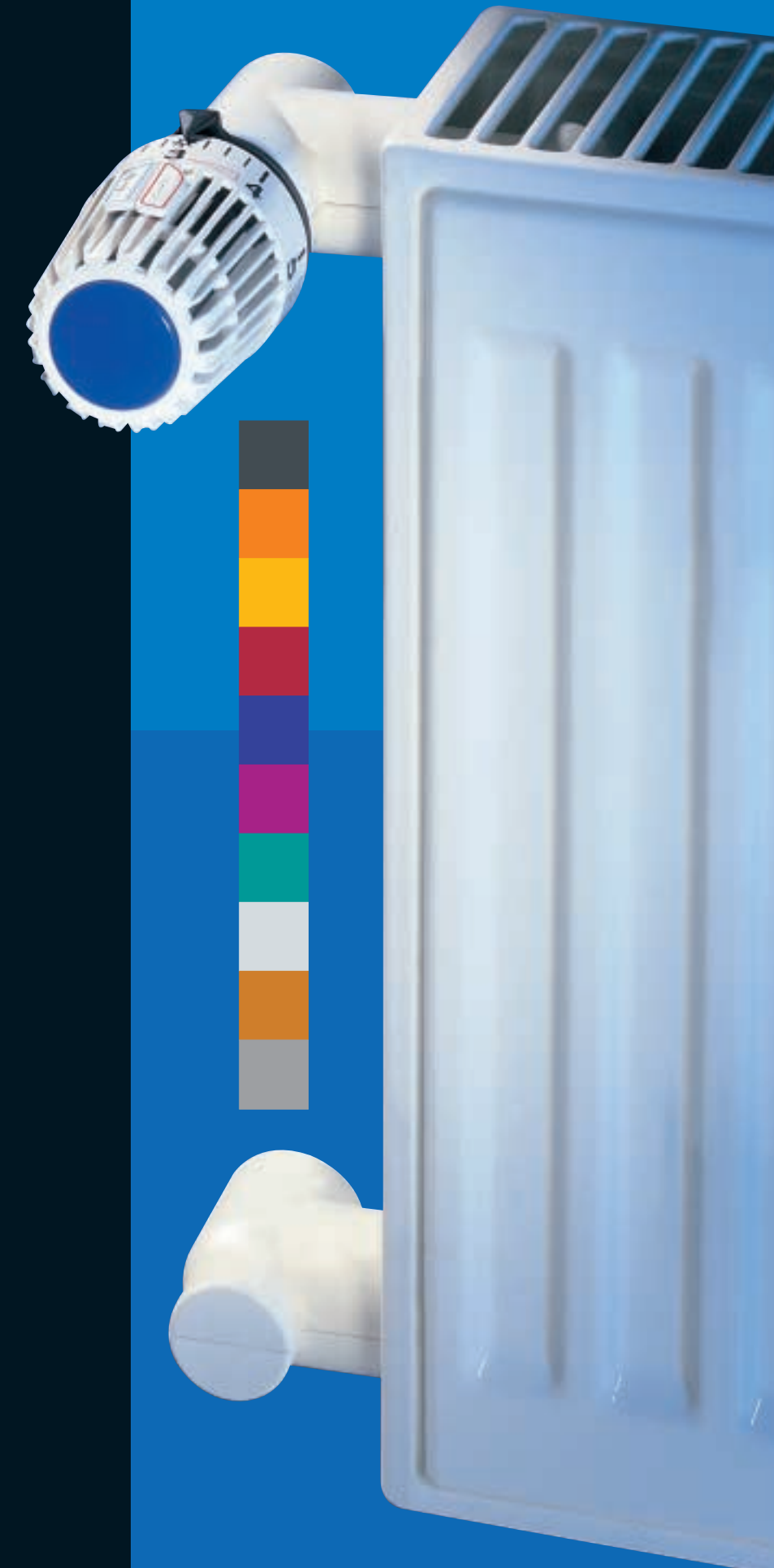


Anthracite grey (RAL 7016)



Chrome

DESIGN  
LINE



# COVERS

Design Line makes it possible – beauty regimen with covers.  
For thermostatic valves, lockshields, Vekolux double connection fittings and Multilux two point connection.  
Your customers will love it.

FOR THERMOSTATIC VALVE BODIES

An enhanced appearance of the entire radiator starts with the thermostatic valve.

The elegant Design Line covers provide for an attractive and easy-to-clean transition from the thermostatic head to the radiator.

## DESIGN LINE

Can be installed at any time and in a matter of seconds. Suitable for all valve bodies with female thread, in angle and straight form, NW 10 and NW 15.

	Angle form	Straight form
NW 10	1361-01.553	1362-01.553
NW 15	1361-02.553	1362-02.553

Supplied without fitting



Covers in angle and straight form, suitable for all Heimeier thermostatic valve types



On thermostatic valve bodies the locking ring of the thermostatic head is covered too

FOR LOCKSHIELDS

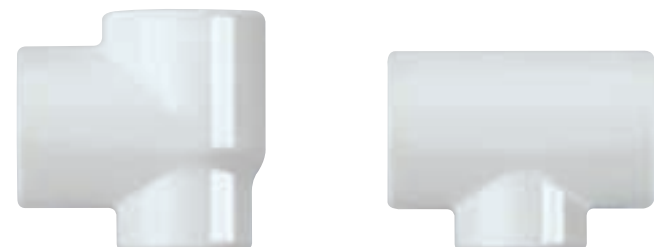
The Design Line covers for the entire current lockshield range provide for a perfect overall appearance of the radiator in conjunction with thermostatic valve covers.

## DESIGN LINE

For lockshields with female thread, whether in angle or straight form, NW 10 or NW 15, the matching cover can be installed in no time and in every building phase without tools.

	Angle form	Straight form
NW 10	1367-01.553	1366-01.553
NW 15	1367-02.553	1366-02.553

Supplied without fitting



Covers in angle and straight form for Regulux and Regutec lockshields

The two half-shells of the cover are installed by simply clicking them together



FOR DOUBLE CONNECTION FITTINGS FOR RADIATORS WITH INTEGRATED VALVES

Installation is really easy for the double connection fittings for radiators with integrated valves: the special Design Line cover fits on all the fittings in the current Vekolux range from Heimeier.

## DESIGN LINE

Regardless whether single or two pipe, angle or straight form, R 1/2 or G 3/4. Installation is possible in every building phase in a matter of seconds. It can't be any easier.

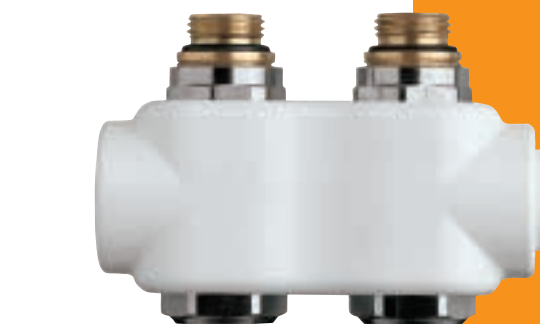


3850-50.553

Supplied without fitting



One cover for all Vekolux double connection fittings



The cover provides for an outstanding fitting design

FOR MULTILUX THERMOSTATIC VALVE BODIES

Multilux, the convenient thermostatic valve solution for the bottom two point connection can be finished neatly with a cover from the Design Line range.

## DESIGN LINE

The cover is suitable for all Multilux models: single pipe or two pipe, angle and straight form, R 1/2 and G 3/4 – alternatively in white or chrome.



white	3850-50.553
chrome-plated	3850-04.553

Supplied without fitting



Available for all Multilux models, also in white



Elegantly designed – a must for bathroom radiators

# THERMOSTATIC HEAD VD

Custom-made without compromise: Our new thermostatic head VD is the consistent solution for radiators with integrated valves – and the first head that was specially designed for them.

Thanks to the unique construction which enables a harmonious transition from the radiator to the thermostatic head for the first time,



**DESIGN**  
LINE

it meets the customers' wishes for design and functionality.

Technically, the thermostatic head VD is also made for radiators with integrated valves. Because almost all thermostatic inserts with the tried and tested connection M 30 x 1.5 installed in radiators with integrated valves are from Heimeier.

In addition colour clips from our Design Line range can be fitted on it.

Further information is available in the brochure "Thermostatic Heads" and in the brochure "K head and VD head"



COLOUR CLIPS



The ingenious Design Line colour clips: in ten different colours, suitable for every home and furnishing style. For perfect interior design to suit every taste.

The colour clips now fit on all current models of the thermostatic head K and on the thermostatic head VD from Heimeier – and are installed in a matter of seconds.

**DESIGN**  
LINE

